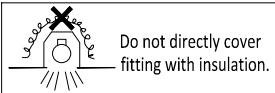


## INSTALLATION MANUAL - CIRA

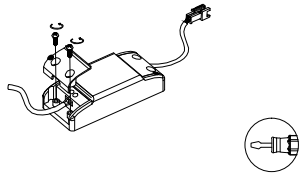
### PREPARATION:

- The mains isolator on the consumer unit/fuse board must be in "OFF" position before commencing any electrical work.
- The luminaires should be mounted on a flat, smooth surface.
- With all painted / plated products some shade and finishing variation may occur, please make sure luminaires are checked before installation.
- The manufacturer reserves the right to improve the product specification without prior notice.

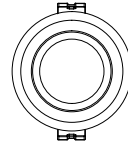


Installation must be done by a qualified electrician.

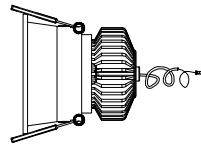
### DRIVER



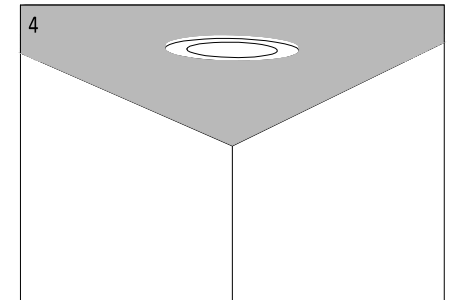
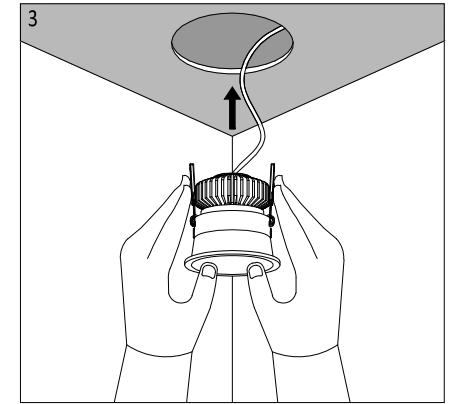
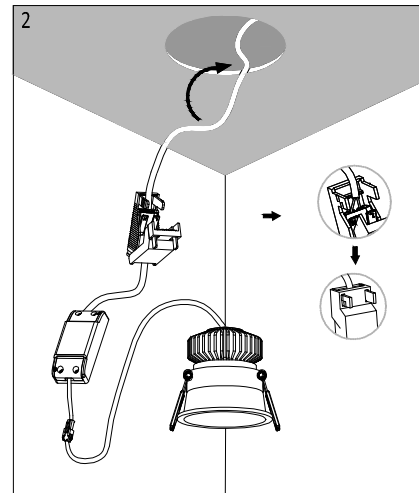
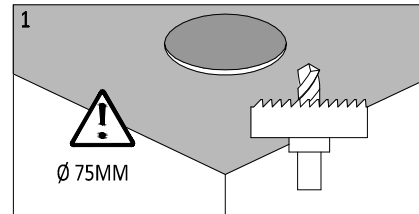
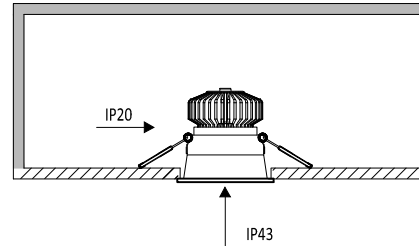
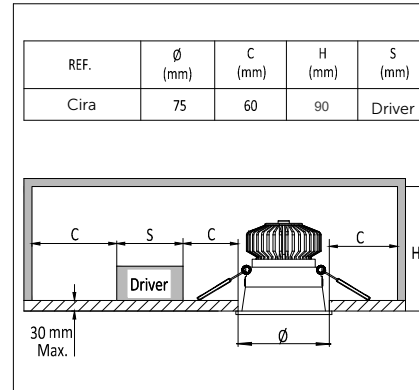
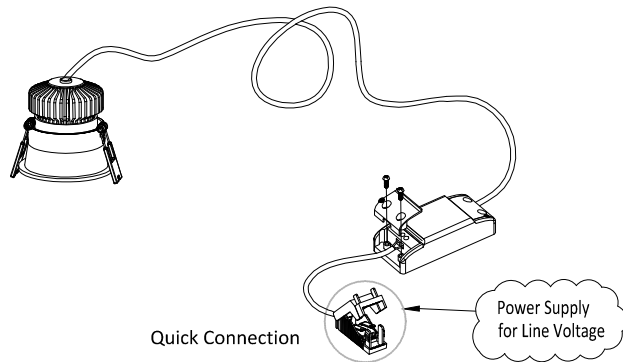
### FRONT SIDE



### PROFILE



### CONNECTION PREVIEW



### UNINSTALL

