

# morphis

# LED

powered by  
Citizen Electronics® LED  
Transformer included

example code:

art.	LED	size	colour
176	L24	H .02	ngg

art.  
**176**

designers **Innocenzo Rifino  
& Lorenzo Ruggieri**

**OHIM:**  
European Patent No.  
001810037-001

**Chinese Patent No.**  
HC-IP Agency Co., LTD  
CN - 302520755 S

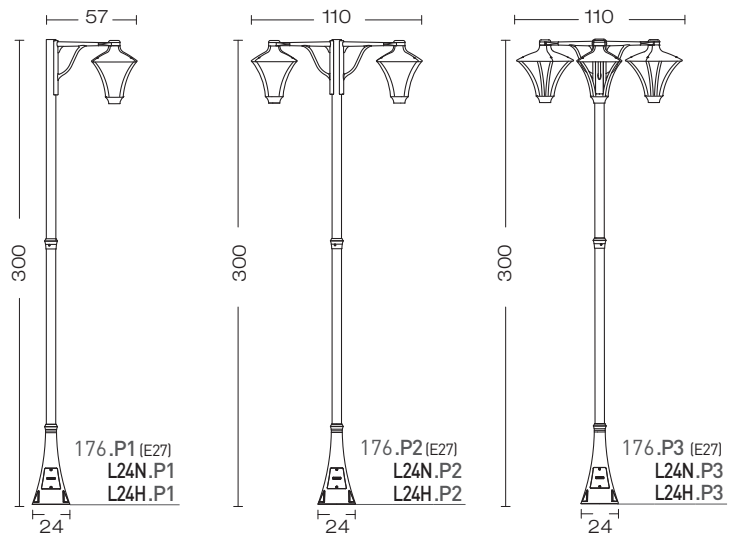
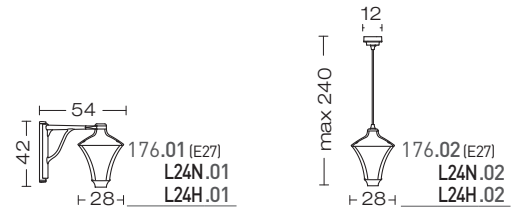
corpo alluminio pressofuso  
body in die casting aluminium  
corps en aluminium moulé  
sous pression  
cuerpo aluminio inyectado  
Körper aus Aluminium-  
Druckguss

diffusore policarbonato  
trasparente  
diffuser transparent  
polycarbonate  
diffuseur polycarbonate  
transparent  
difusor policarbonato  
transparente  
Diffuser Polykarbonat klar



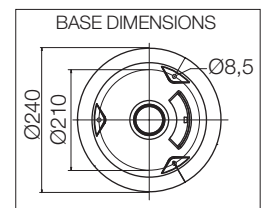
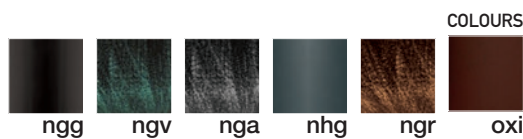
**175**

dettagli / details / details  
detalles / details: p.87



FOR TECHNICAL DETAILS VISIT  
[www.landa.it](http://www.landa.it)

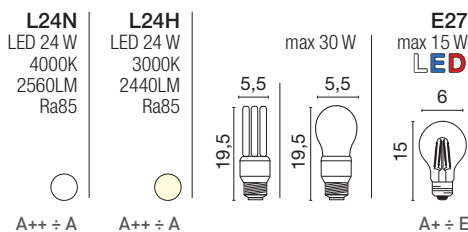
IP65 96°



## LED & INSTALLATION

dettagli / details / details  
detalles / details:  
p.A52-A53

Energy efficiency classes



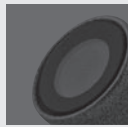
Included:



code **0404M004**  
Single connection IP68

morphis

Projectors



Recessed



**NEW**  
Contemporary



Traditional



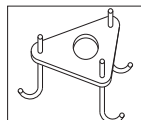
CONTEMPORARY



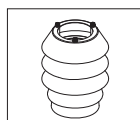
Accessories on request:



code 0404M003  
Loop in loop out IP68

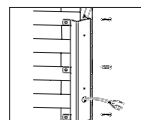


code 00A170.01P  
Anchor Bolt



code 00KR175  
Only for: E27

refrattore  
refractor  
réfracteur  
refractor  
Refraktor



code 00596

angoliera  
corner bracket  
support d'angle  
esquinera  
Eckhalterungen

